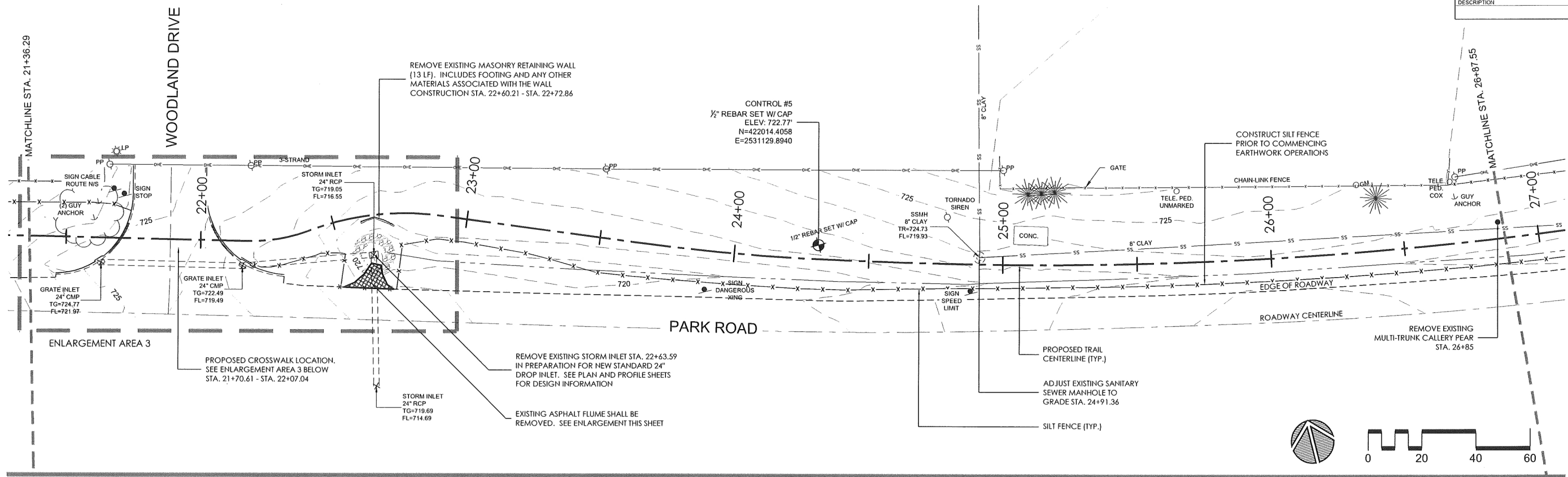
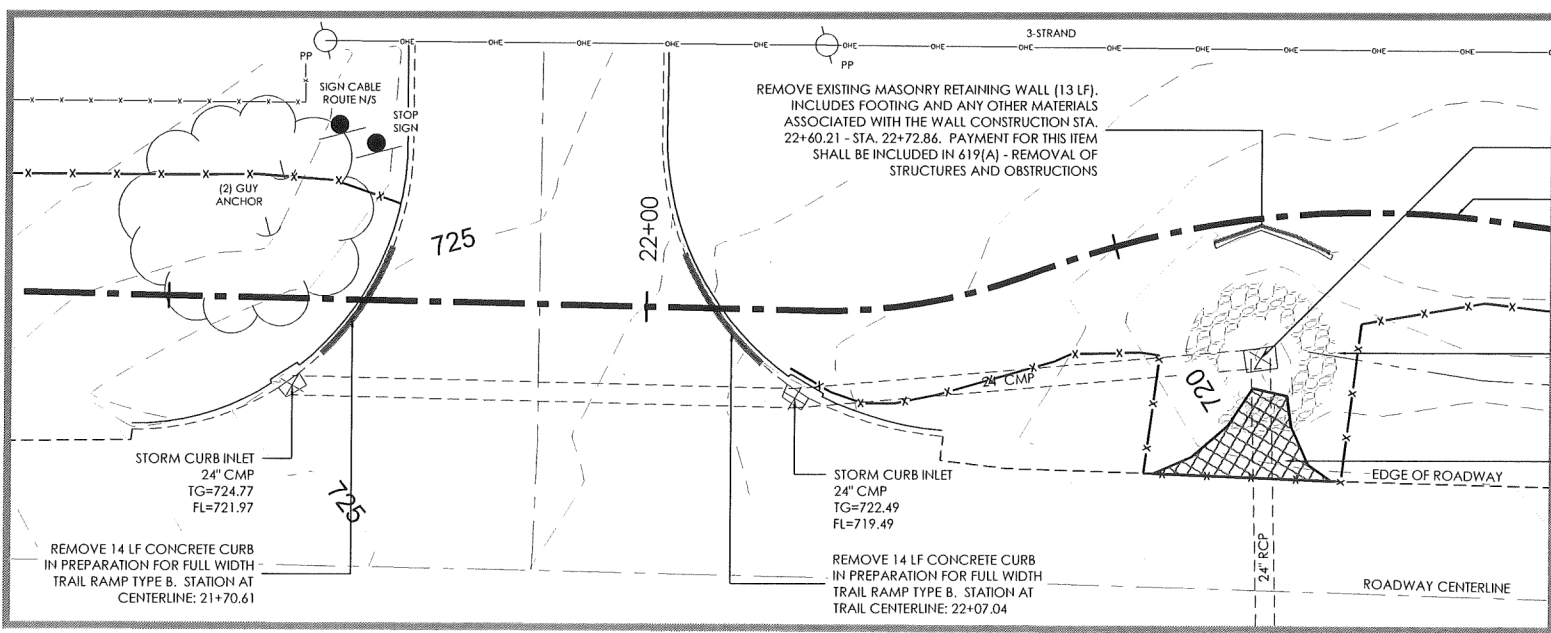


OKLAHOMA DEPARTMENT OF TRANSPORTATION					
FED. ROAD DIST. NO.	STATE	PROJ. NO.	FISCAL YEAR	SHEET NO.	TOTAL SHEETS
6	OKLA.	28844(04)			
DESCRIPTION			REVISIONS	DATE	



DEMO PLAN (5)

NOTE:
DAMAGE TO EXISTING PAVEMENT OR UTILITIES ADJACENT TO REMOVAL AREA SHALL BE REPAIRED OR REPLACED AT CONTRACTOR'S EXPENSE.



ENLARGEMENT AREA 3

LEGEND

-x-x-x-	FENCELINE	- - - - -	MATCHLINE
- - - - -	FIBER OPTIC CABLE	- - - - -	R.O.W. LINE
-g-	GAS LINE	- - - - -	TRAIL CENTER LINE
-o-e-	OVERHEAD ELECTRIC	-x-x-	SILT FENCE
-ss-	SANITARY SEWER LINE	- - - - -	REMOVAL OF CURB
-s-s-	STORM SEWER LINE	[X-X-X-X]	REMOVAL AREA
-w-	WATER LINE		

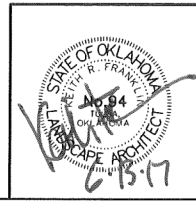
NOTE:
OBJECTS NOT REPRESENTED IN LEGEND MAY BE IDENTIFIED ON THE COMPLETE SURVEY LEGEND - SHEET 6

REMOVE EXISTING STORM INLET 24" CMP TO 24" RCP STA. 22+63.59. PREPARE FOR CONSTRUCTION OF NEW 24" STANDARD DROP INLET. ADJUSTMENT OF PIPE LENGTH FOR PLACEMENT OF NEW INLET STRUCTURE SHALL BE CONSIDERED INCIDENTAL TO THE REMOVAL OF DRAINAGE INLETS

PROPOSED TRAIL CENTERLINE (TYP.)

PLACE SEDIMENT FILTER TYPE II AROUND INLET LOCATION TO PREVENT SEDIMENT FROM ENTERING THE CITY STORM SEWER NETWORK. REFER TO ODOT STANDARD DETAIL ISC2-3 FOR TEMPORARY SEDIMENT CONTROL

REMOVE EXISTING 9 SY ASPHALT FLUME TO INLET STRUCTURE. SAWCUT FULL DEPTH ALONG EDGE OF ROADWAY FOR CLEAN REMOVAL STA. 22+46.86 - STA. 22+71.50



City of Sand Springs - Park Road Trail			PREPARED BY: LANDPLAN CONSULTANTS	
Design	JM	7/16	Tulsa County	
Drawn	JM/BB	8/16	DEMO PLAN (5) STATE JOB NO. 28844(04)	
Checked	KF/JM	6/17		
Approved				
Squad	LandPlan		Sheet No. 26 of 62	